
VEHICLE TYPE

MAN/MERCEDES/BMC PROFESYONEL/FORD CARGO/
CHRYSLER HINO/DODGE/FARGO/HYUNDAI/
ASTRA IVECO/DAF/DAEWOO/RENAULT/
EBRO/GUY/AVIA/SAURER/SISU/STEYR

TRANSMISSION TYPE

ZF S5/AK/6S-120-111-110-92 GP
ZF S5/AK/6S-90-80-70-66-65-55-50-42-36-35
ZF AK 6 80 / AK 6 90 / S6 80 / S6 90

Kozmaksan ZF Power Take OFFs designed for ZF series main transmissions. Kozmaksan ZF PTOs has Single&Double output models, Rear&Side Mounting type options and available for UNI&ISO mounting housing or suitable for flange connections.

Applications;

- Garbage Truck
- Crane Truck
- Dump Truck

Vehicle Type

PNEUMATIC

REAR MOUNTING

Transmission Type

ZF S5/AK/6S-120-111-110-92 GP / ZF S5/AK/6S-90-80-70-66-65-55-50-42-36-35 / ZF AK 6 80 / AK 6 90 / S6 80 / S6 90

ZF.2

Product Code

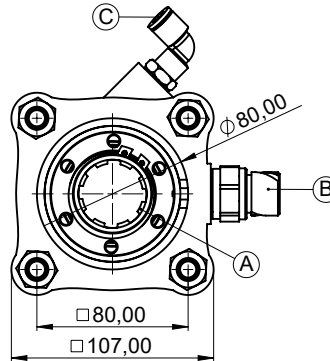
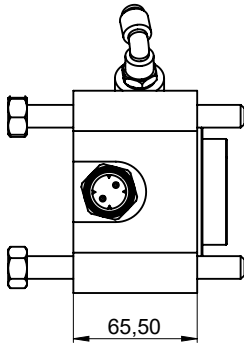
01

31/12/2018

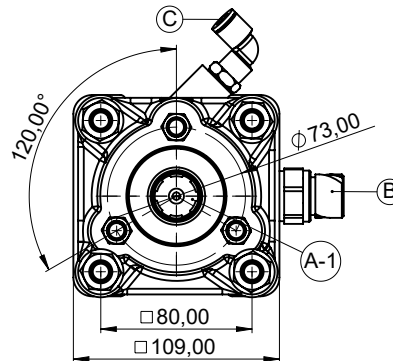
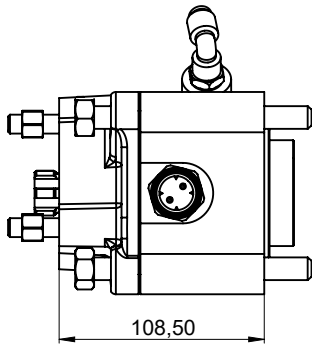
2/5

Rev. Date

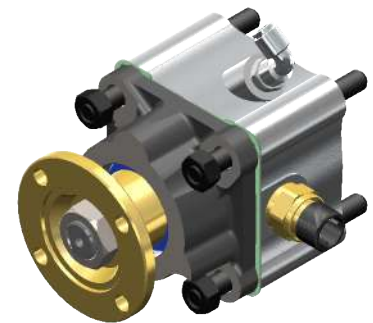
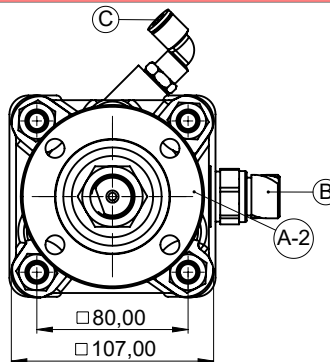
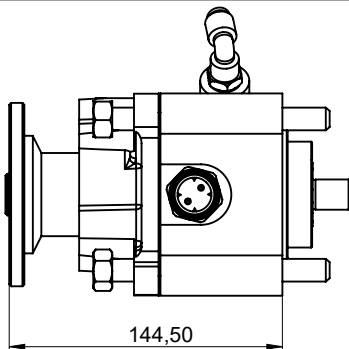
ISO OUTPUT



UNI OUTPUT



FLANGE OUTPUT

**A** DIN 5462 / 32x36x8 / ISO 14 - 4 Bolts Output**B** Engage/Disengage Sensor (Opt.)**C** Air Inlet**A-1** DIN 5463 / 6x21x25 / UNI 3 Bolts Output**A-2** ISO 7647-7646 Standard Flange

	ISO Output	UNI Output	Flange Output
Power(kW)@1000 RPM	44	23	44
Max. Torque (Nm)	420	220	420
Weight (Kg)	2,5	5	7,5
Ratio	1/1		
Mounting Type	Rear Mounting		
Sense of Rotation	CW		

- Kozmaksan has all rights to change information in this catalogue without announcing it. This document is representing general information. It is not a contract.
 - All information belongs to only PTO/Split Shaft. Do not use PTO/Split Shaft, if it is not suitable for your engine and main transmission.
 - Pumps, shafts and other parts should not be longer or heavier than approved distance and weight by the manufacturer of main transmission and engine.

KozmaksanPTO

kozmaksanpto

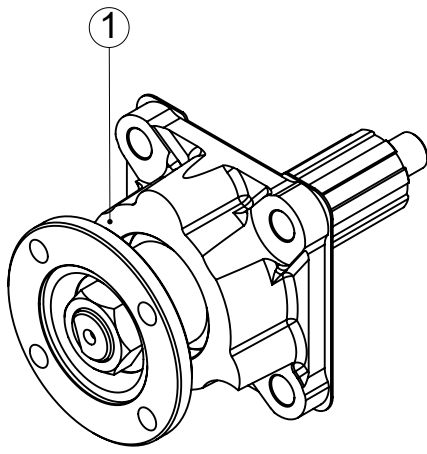
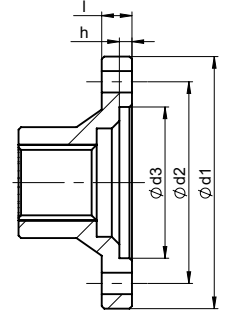
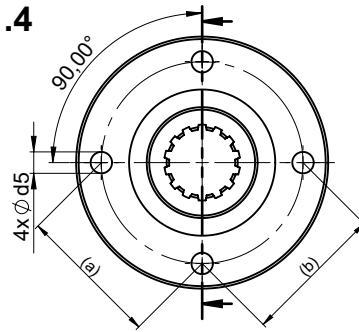
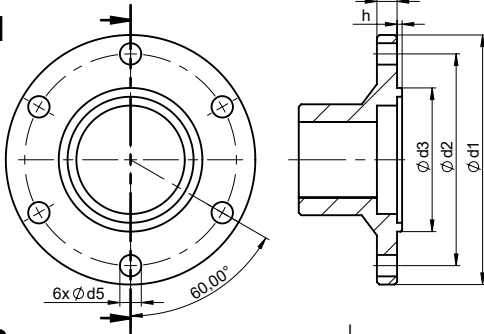
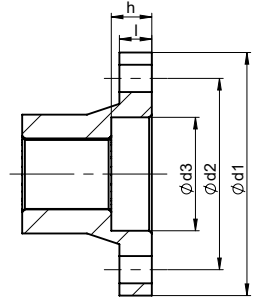
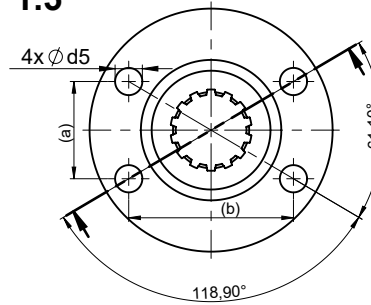
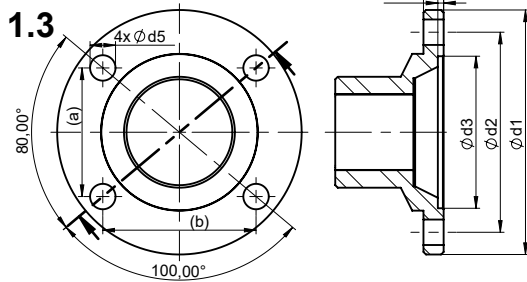
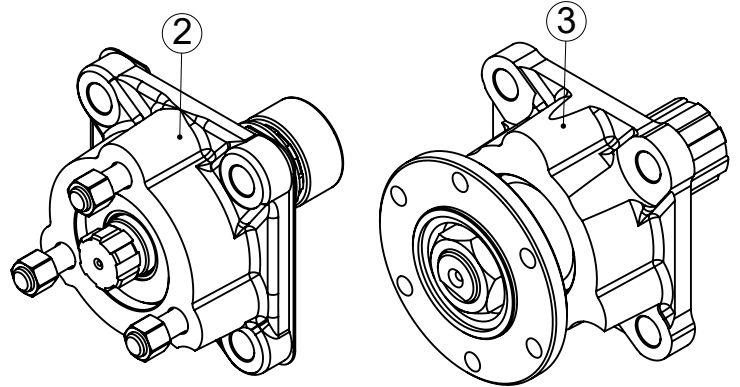
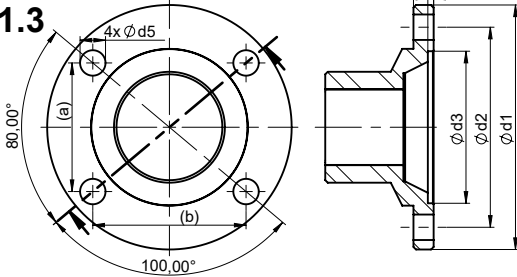
kozmaksan-hydraulics-pt

ZF.2

Product Code

01**31.12.2018****3/5**

Rev. Date

**1.4****1.1****1.5****1.2****1.3**

	Ød1	Ød2	Ød3	Ød5	l	h	Hole	(a) x (b)
1.1	100	84	57	8,1	8	2,3	6	-
1.2	97	79,37	60,32	10,1	8	2,3	4	51 x 60,8
1.3	87	69,85	57,10	8,1	2	2	4	45 x 53,5
1.4	100	80	60	8,5	12	5	4	56,5 x 56,5
1.5	90	70,83	42	10,1	12	15	4	36 x 61

Flanges are same for KIT.55.04 and KIT.55.02

Dinensions are mm.

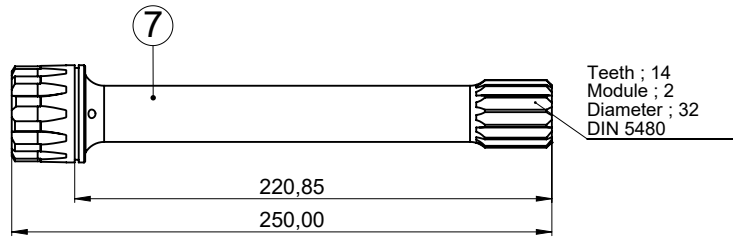
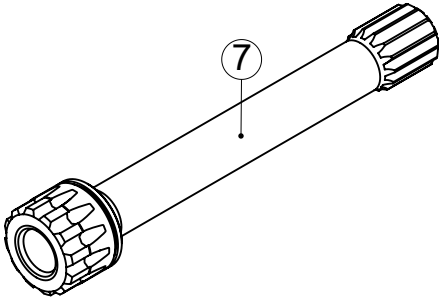
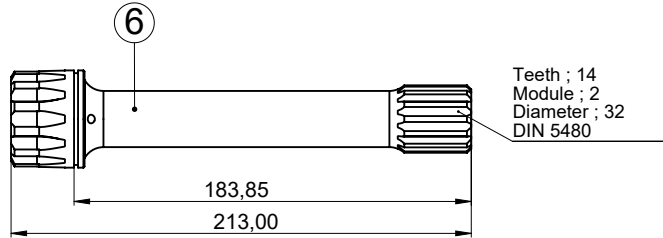
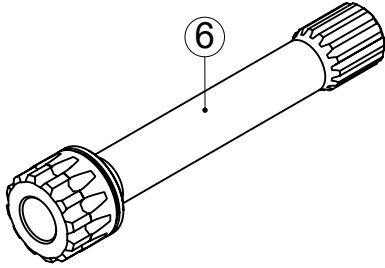
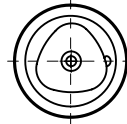
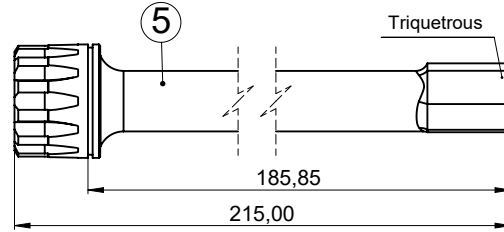
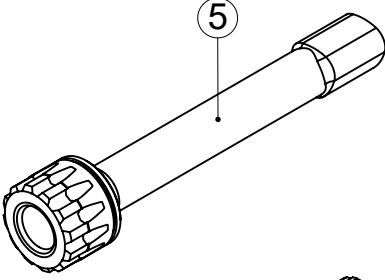
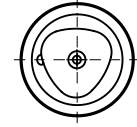
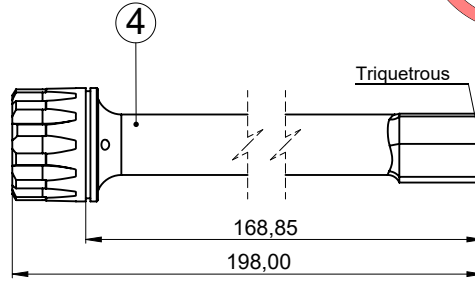
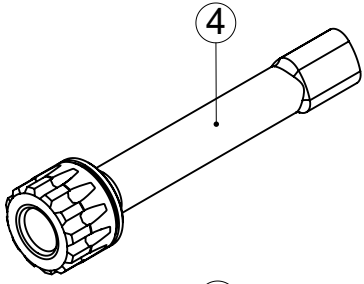
No	Code	Description			
1	KIT.55.04.UF	Flange Adapter			
1.1	C06-076	ISO 7646-100x6x8			
1.2	C06-045	ISO 7647-SAE 1300x4x10			
1.3	C06-082	ISO 7647 - SAE 1100x4x8			
1.4	C06-194	Ø100 Flange			
1.5	C06-192	Ø90 Flange			
2	KIT.52.02.KF	UNI Adapter			
3	KIT.55.02.UF	Flange Adapter			

- Kozmaksan has all rights to change information in this catalogue without announcing it. This document is representing general information. It is not a contract.
 - All information belongs to only PTO/Split Shaft. Do not use PTO/Split Shaft, if it is not suitable for your engine and main transmission.
 - Pumps, shafts and other parts should not be longer or heavier then approved distance and weight by the manufacturer of main transmission and engine.

KozmaksanPTO

kozmaksanpto

kozmaksan-hydraulics-pt



No	Code	Description			
4	KM16S130K	PTO 16S130 PTO Shaft 198 mm			
5	KM16S130U	PTO 16S130 PTO Shaft 215 mm			
6	KML-16S151	PTO 16S151 PTO Shaft			
7	KML-11151-250	ZF NEW ECOSPLIT 16S2221-2521-222 PTO Shaft 250 mm			

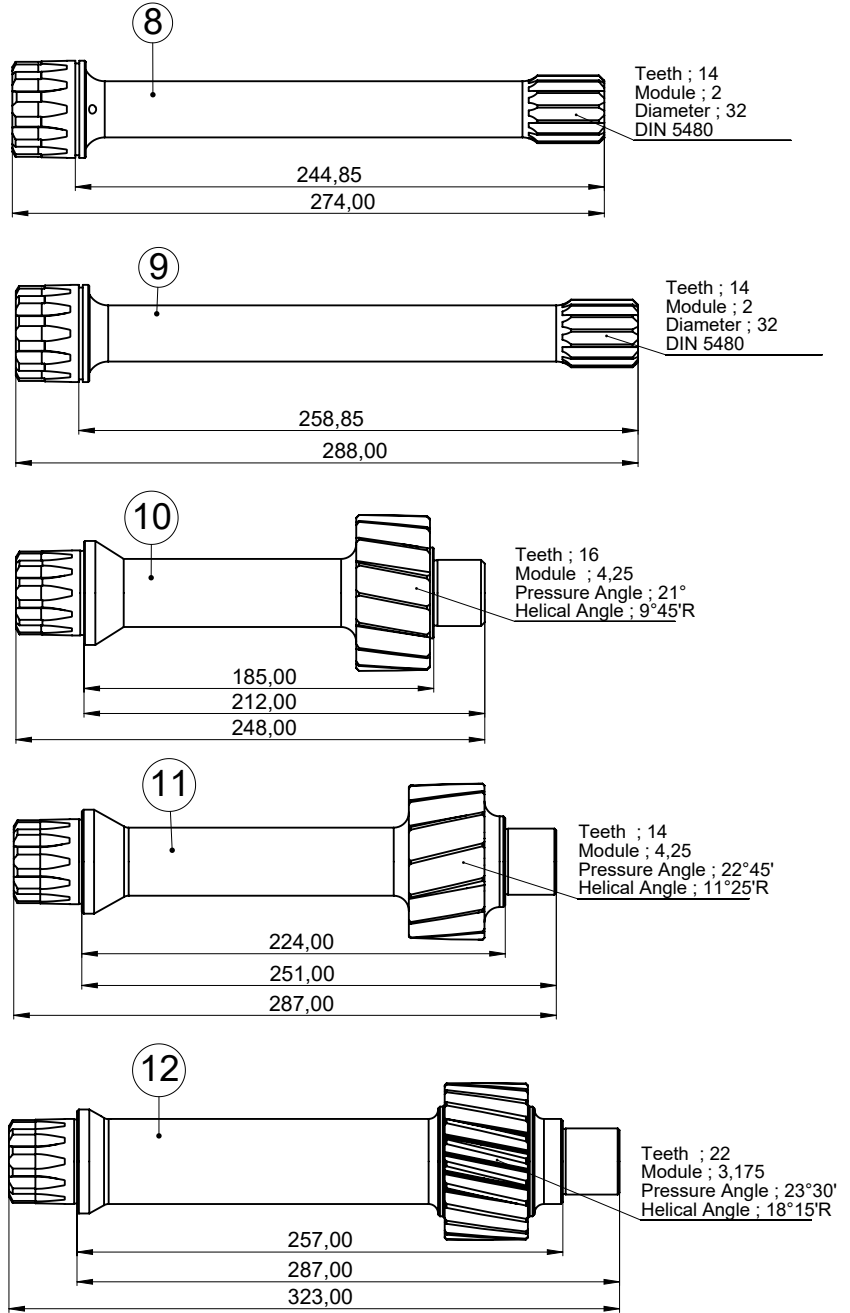
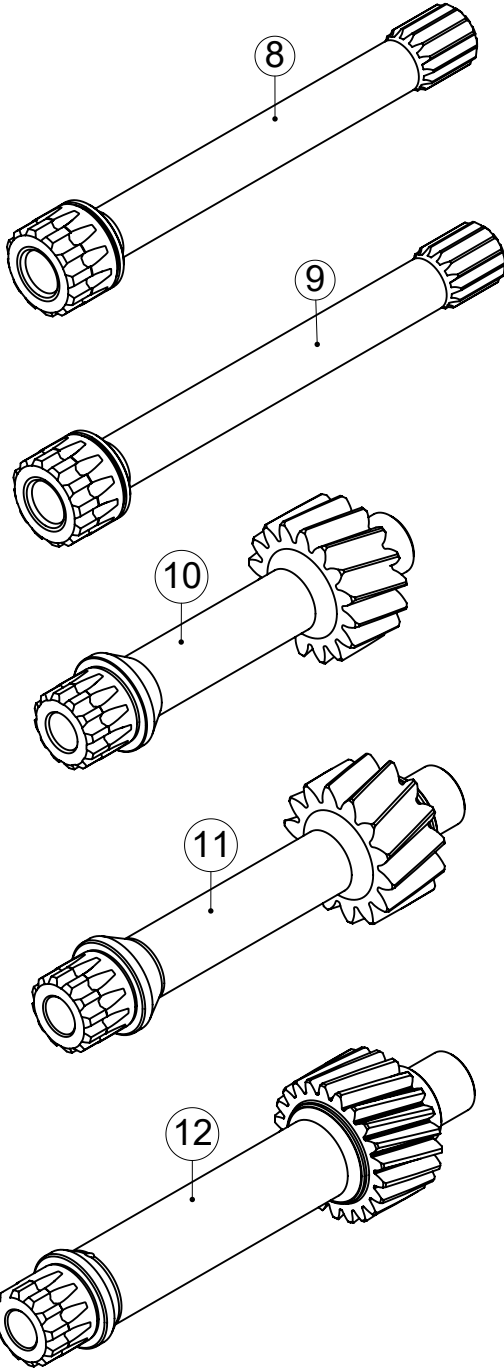
- Kozmaksan has all rights to change information in this catalogue without announcing it. This document is representing general information. It is not a contract.
 - All information belongs to only PTO/Split Shaft. Do not use PTO/Split Shaft, if it is not suitable for your engine and main transmission.
 - Pumps, shafts and other parts should not be longer or heavier than approved distance and weight by the manufacturer of main transmission and engine.

KozmaksanPTO

kozmaksanpto

kozmaksan-hydraulics-pto

ZF.2			Product Code
01	31/12/2018	5/5	Rev. Date



No	Code	Description			
8	KML-11151-274	ZF NEW ECOSPLIT 16S2221-2521-222 PTO Shaft 274 mm			
9	KML-11151-288	ZF NEW ECOSPLIT 16S2221-2521-222 PTO Shaft 288 mm			
10	KML-9S75	PTO 9S75 (13.16) PTO Shaft			
11	KML-9S10991	PTO 9S109 (12.91) / 16S109 (13.41) PTO Shaft without Bearing			
12	KML-12AS1420	PTO 12AS1420TD PTO Shaft with Bearing			

- Kozmaksan has all rights to change information in this catalogue without announcing it. This document is representing general information. It is not a contract.
- All information belongs to only PTO/Split Shaft. Do not use PTO/Split Shaft, if it is not suitable for your engine and main transmission.
- Pumps, shafts and other parts should not be longer or heavier than approved distance and weight by the manufacturer of main transmission and engine.

KozmaksanPTO

kozmaksanpto

kozmaksan-hydraulics-pt